

MARTA RIDERS' ADVISORY COUNCIL PRESENTATION
June 2, 2021



**MARTA POLICE DEPARTMENT
OVERVIEW**

Presented by:
Deputy Chief Mike Burrows
mburrows@itsmarta.com
404-848-3938



**M. Scott
Kreher**

**AGM/Chief of
Police &
Emergency
Management**

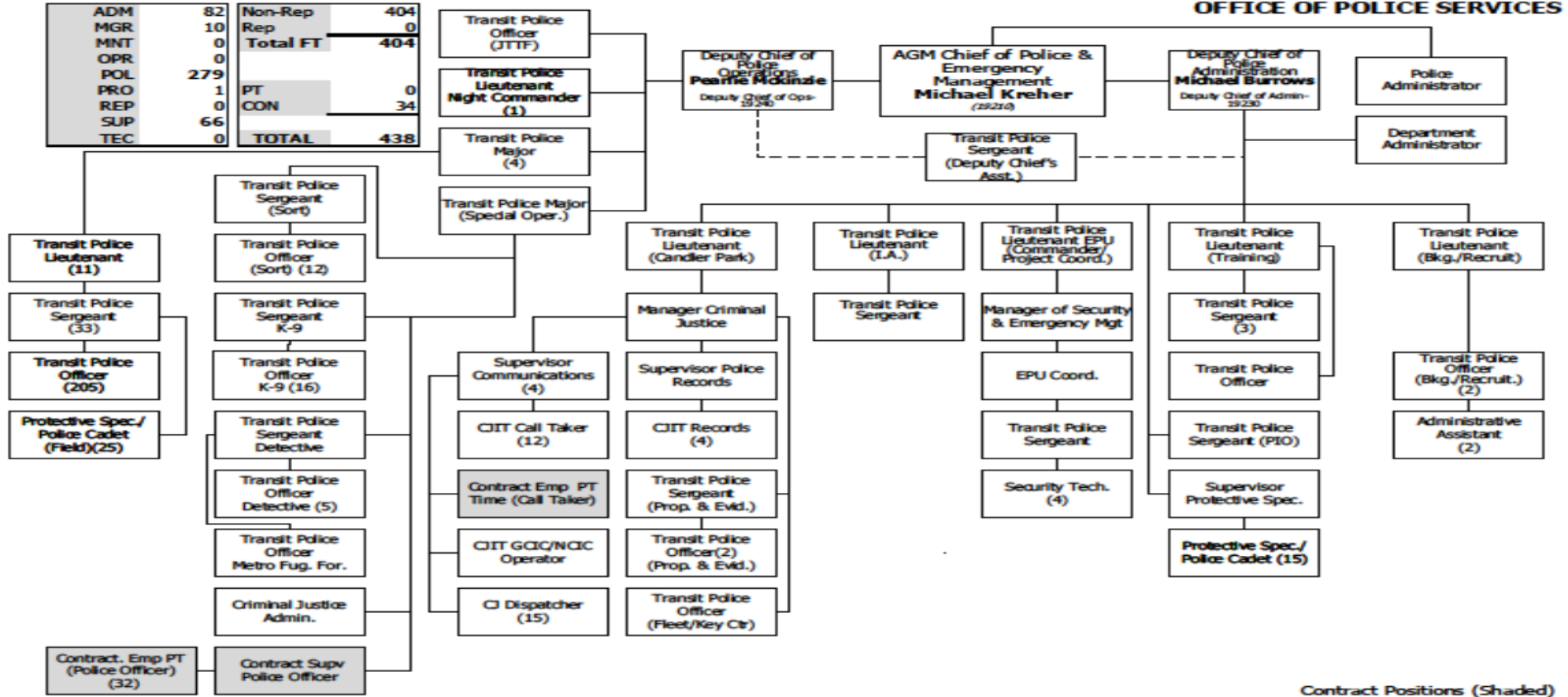
MPD Organizational Chart

X This chart is not to be used for recruitment purposes. It is for informational purposes only. It is not intended to be used for recruitment purposes.



FY2021 OPERATING & CAPITAL BUDGETS

ADM	82	Non-Rep	404
MGR	10	Rep	0
MINT	0	Total FT	404
OPR	0	PT	0
POL	279	CON	34
PRO	1	TOTAL	438
REP	0		
SUP	66		
TEC	0		



Deputy Chief Administration

Background & Recruitment
Police Review Committee
Internal Affairs
Emergency Preparedness Unit
Police Communications Center
Records Management
Criminal Justice Manager
Emergency Operations Center
Accreditation/Special Projects

Quartermaster
Budget/Finance
Fleet
Property & Evidence
Honor Guard
Protective Specialist
Training

Michael Burrows
mburrows@itsmarta.com
404-848-3938



Deputy Chief Operations

Field Operations

Five Police Precincts

Field Protective Specialists

MARTA HOPE Team

Reserve Officer Program

Administrative Sergeant

Joint Terrorism Task Force

Southeast Regional Fugitive Task Force

Special Operations

Special Operations Response Team (SORT/SWAT)

Bomb Assessment Team (BAT)

K9 Explosive Ordinance Detection (EOD)

Criminal Investigations

Crisis Negotiation Team

Pearlie McKinzie

PMcKinzie@itsmarta.com

404-848-4908



North Precinct

Precinct Commander

Major Willie Davenport

wdavenport@itsmarta.com

404-848-4813

Precinct Location

Dunwoody Station

111 Hammond Drive

Atlanta, GA 30346

Responsible for 14 Stations from Civic Center north to North Springs and northeast to Doraville



South Precinct & Clayton County Precinct

Precinct Commander

Major Eugene Roberts

eroberts@itsmarta.com

404-848-3642

Precinct Location

College Park Station
3800 East Main Street
Atlanta, GA 30346

Clayton County
1115 Mount Zion Road, Suite M
Morrow, GA 30260

Responsible for 7 Stations from Garnett to Airport & Clayton County bus routes





Central Precinct

Precinct Commander

Major Ernest Cloud

ewcloud@itsmarta.com

404-848-3098

Precinct Location:

Five Points Station

30 Alabama Street

Atlanta, GA 30346

Responsible for 9 Stations from Five Points west to HE Holmes and Bankhead, north to Peachtree Center and east to Georgia State



East Precinct

Precinct Commander

Major Fredrico Jackson

fajackson@itsmarta.com

404-848-3072

Precinct Location:

Indian Creek Station

3901 Durham Park Road

Stone Mountain, GA 30032

Responsible for eight stations from King Memorial to Indian Creek



Special Operations

Commander

Major Matthew Carrier
mcarrier@itsmarta.com
404-848-3072

Office Location

MARTA Police Headquarters
2424 Piedmont Road, NE
Atlanta, GA 30305

Responsible for BAT, K9/EOD, SORT, CIU





2021 Motors Unit



K9 Units at the 2021 Presidential Inauguration

Crime Stats

 MARTA POLICE DEPARTMENT DAILY REPORT WEEK: #21 SUNDAY 05/23/21 00:01HRS TO SATURDAY 05/29/21 2400HRS CHIEF M. Scott Kreher OPERATIONS DC P. McKinzie ADMINISTRATION DC M. Burrows 									
MARTA POLICE DEPARTMENT OVERVIEW "MANAGEMENT STATS ONLY"	7 DAY 2021	7 DAY 2020	7 DAY % CHANGE	4/27/21-5/27/21	4/27/20-5/27/20	MTHLY % CHANGE	YTD 2021	YTD 2020	YTD % CHANGE
OFFENSES									
Homicide	0	0	0%	0	0	0%	1	1	0%
Robbery	1	0	100%	5	2	150%	12	16	-25%
Aggravated Assault	1	1	0%	4	6	-33%	18	34	-47%
Larceny / From Auto	0	0	0%	1	0	100%	9	10	-10%
Larceny / Other	1	1	0%	6	14	-57%	25	82	-70%
Auto Theft	0	0	0%	0	0	0%	2	6	-67%
Arson	0	0	0%	0	0	0%	2	2	0%
Burglary	0	0	0%	0	1	-100%	0	1	-100%
TOTAL OFFENSES	3	2	50%	16	23	-30%	69	152	-55%

MPD Emergency Preparedness Unit



MPD Tools

X This image cannot be displayed. Your computer may not have enough memory to open the image, or the image may have been moved. Restart your computer, and open the file again. If the red x still appears, you may have to delete the image and then insert it again.



Body Worn Camera



Signal Sidearm



Questions